

MEMORIAL UNIVERSITY OF NEWFOUNDLAND
DEPARTMENT OF MATHEMATICS AND STATISTICS

SECTION 1.2

Math 1090 Worksheet

FALL 2009

For practise only. Not to be submitted.

1. Given the function

$$f(x) = \frac{5}{2}x - 3,$$

determine each of the following.

- (a) $f(0)$ (b) $f(1)$ (c) $f(-1)$
(d) $f(-2)$ (e) $f(10)$ (f) $f\left(-\frac{1}{10}\right)$

2. Given the function

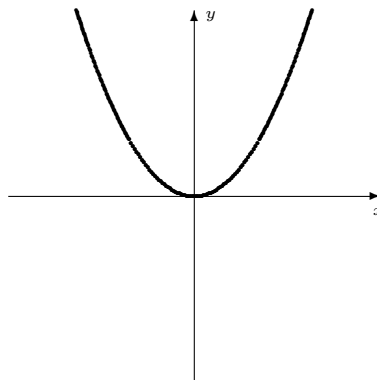
$$g(x) = x(2 - x),$$

evaluate each of the following. Plot each point on the Cartesian plane.

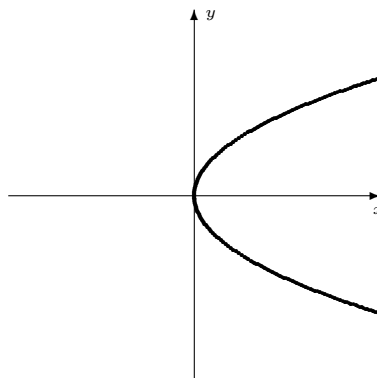
- (a) $g(2)$ (b) $g(-1)$ (c) $g\left(\frac{5}{2}\right)$

3. For each of the following graphs, determine whether it is the graph of a function. Explain your answer in each case.

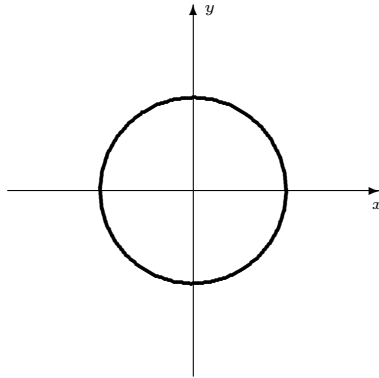
(a)



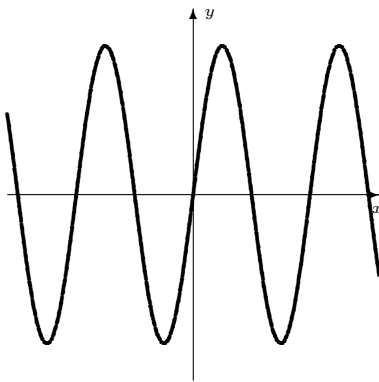
(b)



(c)



(d)



(e)

