

Coltbridge

7-8, 15-16, 20-24, 28 : B. Sawyer

1-6, 9-14, 19, 25-27, 29-32 : S. Inglis

♩=180



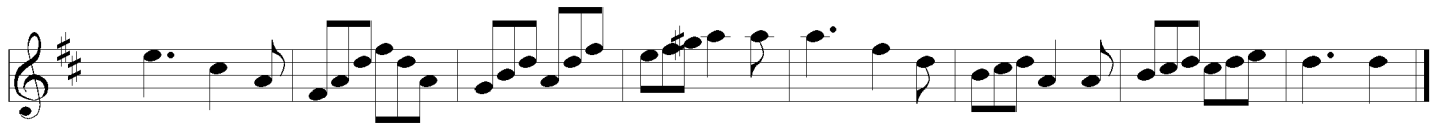
D G D D G A7 D G D G A7 D



D G D D G A7 D G D G A7 D



A D G D E7 A A D G D A7 D



A D G D E7 A D G D G A7 D